



RUBBER FLOORING
IN PLANKS

NEOFLEX
FRANNEWORK
SERIES

Neoflex Framework Series.

Neoflex™ Framework Series is a 100% EPDM rubber floor covering made of polymerically bound synthetic rubber, which incorporates an advanced polyurethane coating technology.

Designed for use in indoor fitness and leisure settings, it exhibits excellent physical properties of EPDM rubber floors such as user comfort, flexibility, durability, sound insulation and step noise reduction.

Neoflex Fitness Flooring is globally recognized as a superior product of an ISO 9001 & ISO 14001 certified manufacturer of rubber flooring for 33 years.



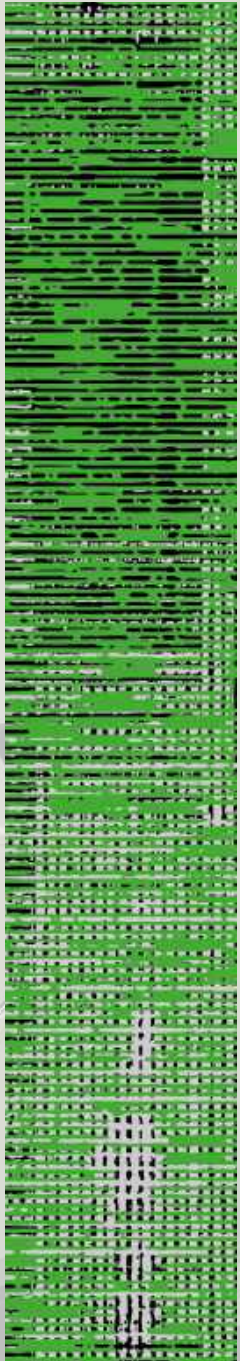


Color
488 SH17 GD18

Thickness
8 mm

Installation
Random

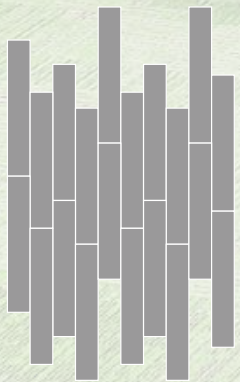




Color
488 SH05 GD10

Thickness
6 mm

Installation
Random



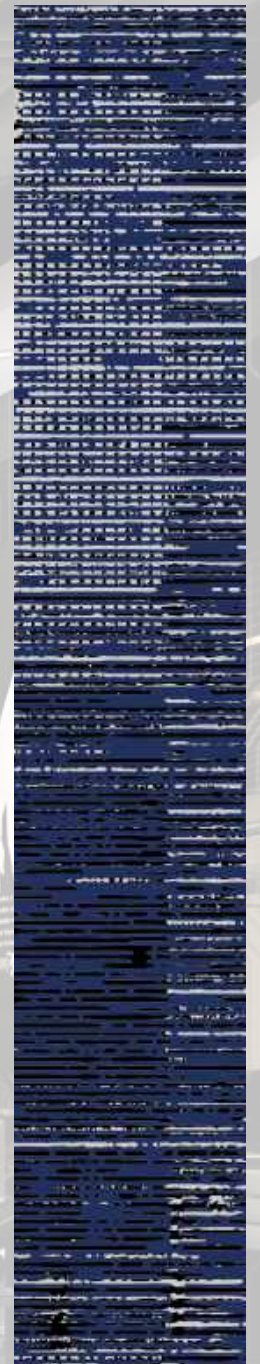
Urban Inspiration.

Inspired by the essential supporting structure of an urban city, and designed to evoke a subtle, textured, contemporary aesthetic.

Neoflex Framework Series showcases exquisite color combinations across its 44 colorways, giving the floor a strong presence that is at once both dramatic, yet reassuring.



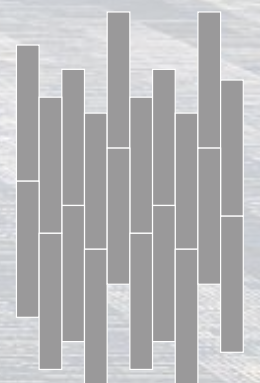


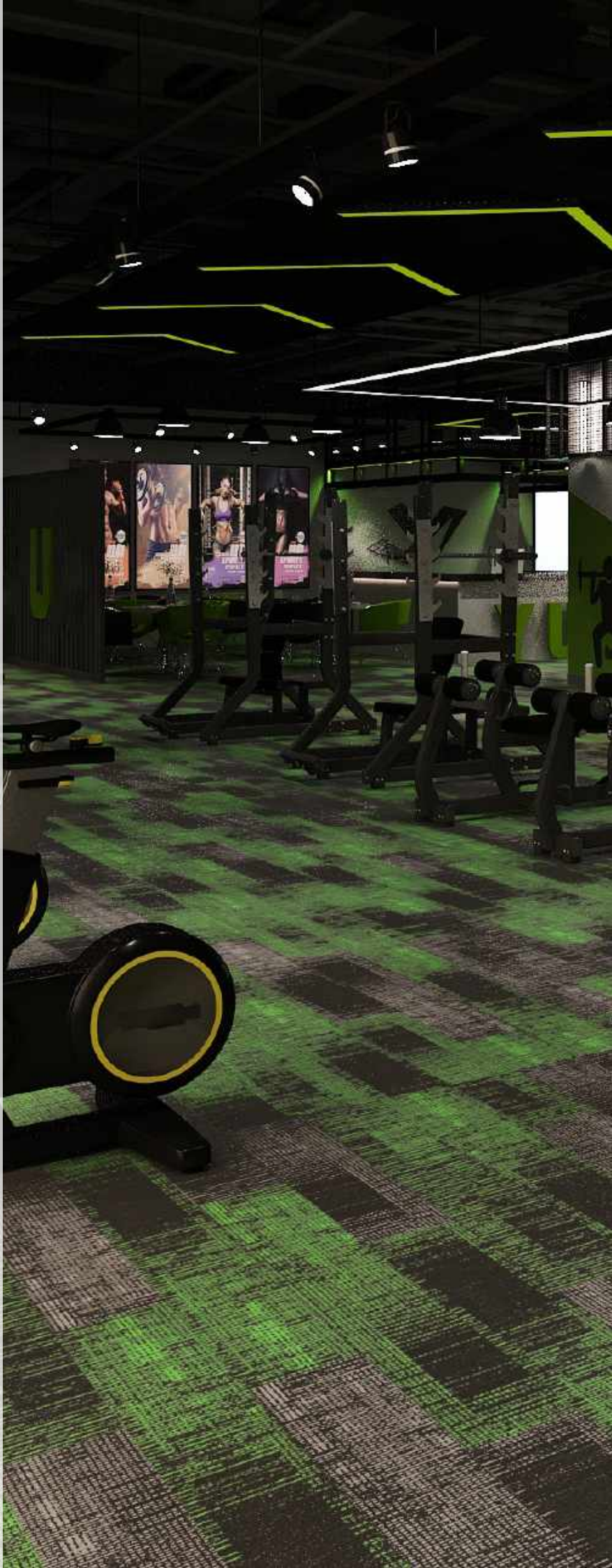


Color
488 SH05 GD20

Thickness
10 mm

Installation
Random





Colors

488 SH10 GD07

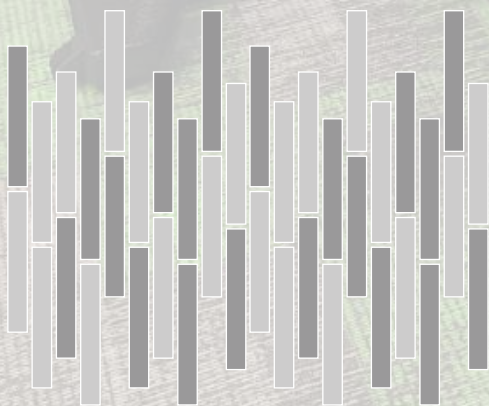
488 SH06 GD07

Thickness

8 mm

Installation

2-Color Random









Colors
488 SH05 GD06

Thickness
6 mm

Installation
Herringbone

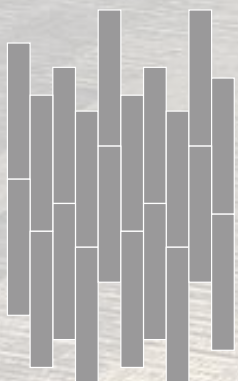




Color
488 SH16 GD06

Thickness
10 mm

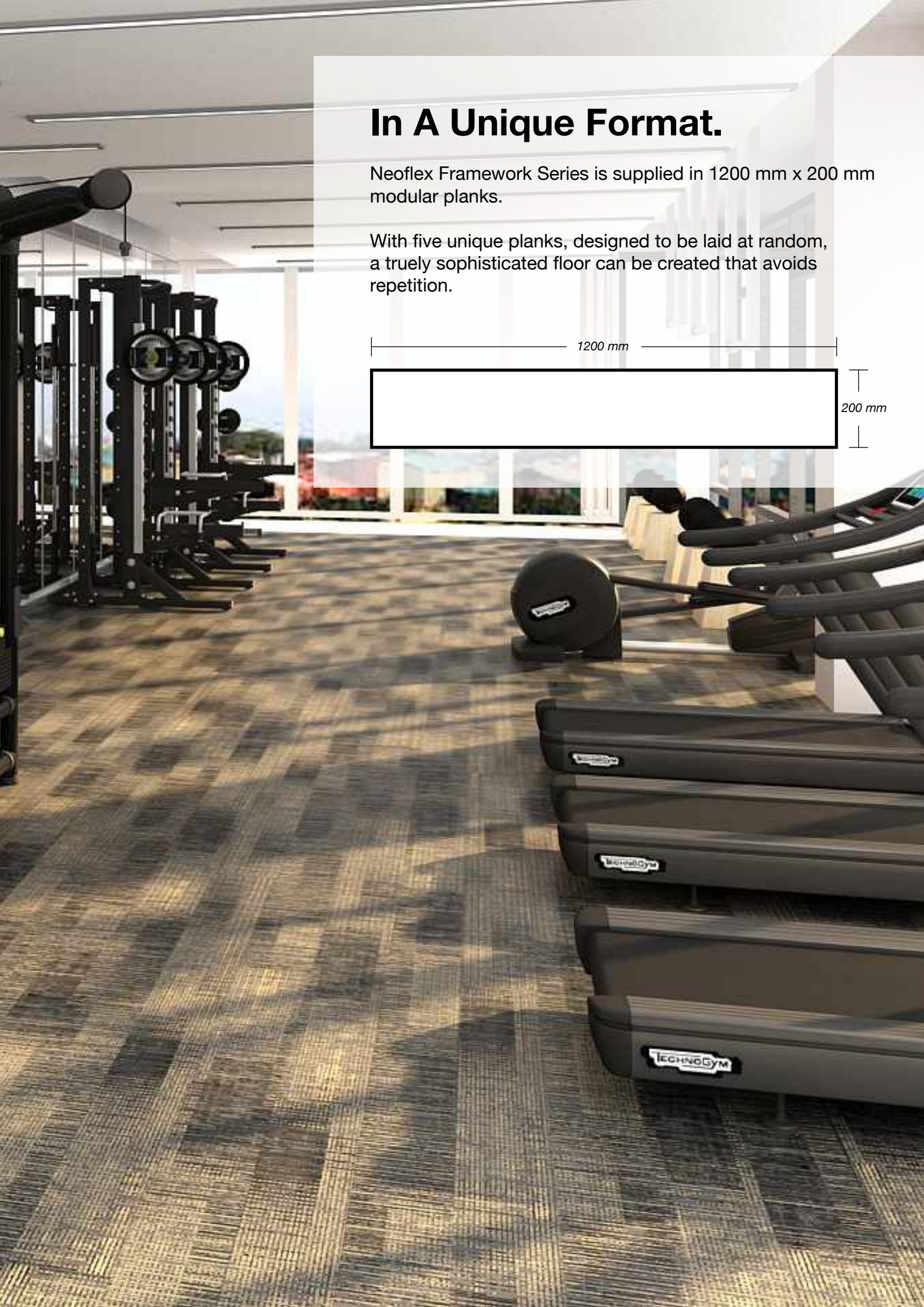
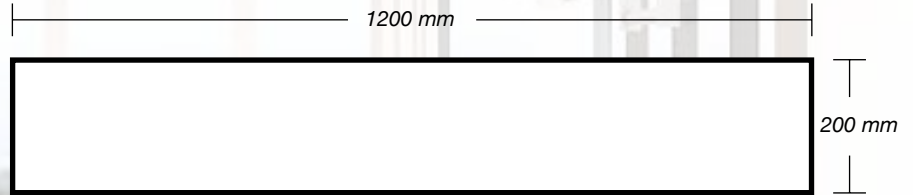
Installation
Random



In A Unique Format.

Neoflex Framework Series is supplied in 1200 mm x 200 mm modular planks.

With five unique planks, designed to be laid at random, a truly sophisticated floor can be created that avoids repetition.

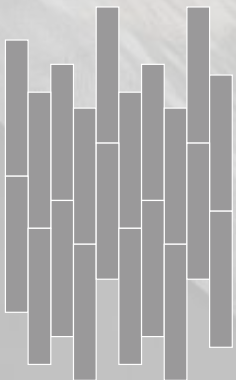


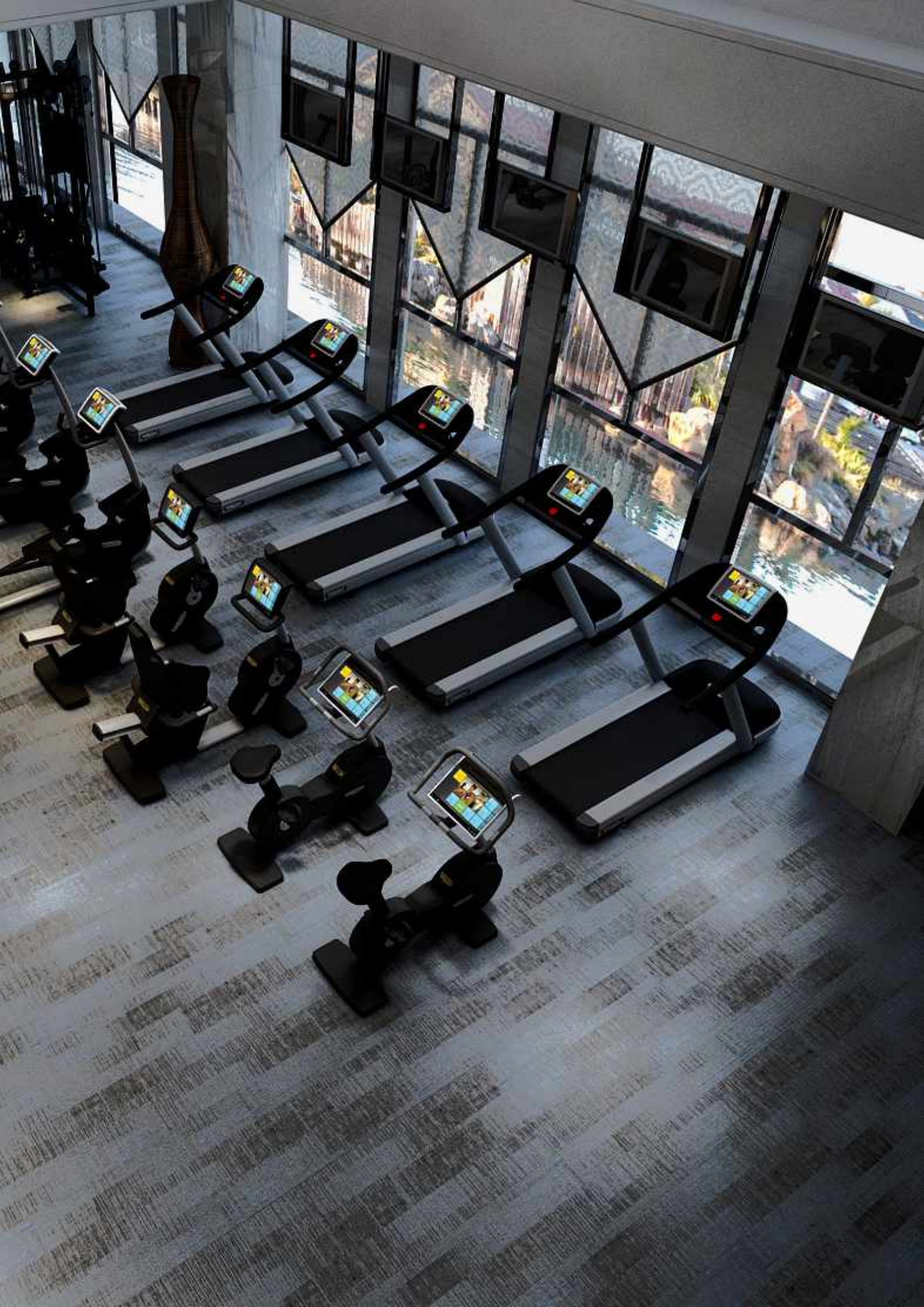


Color
488 SH08 GD06

Thickness
10 mm

Installation
Random



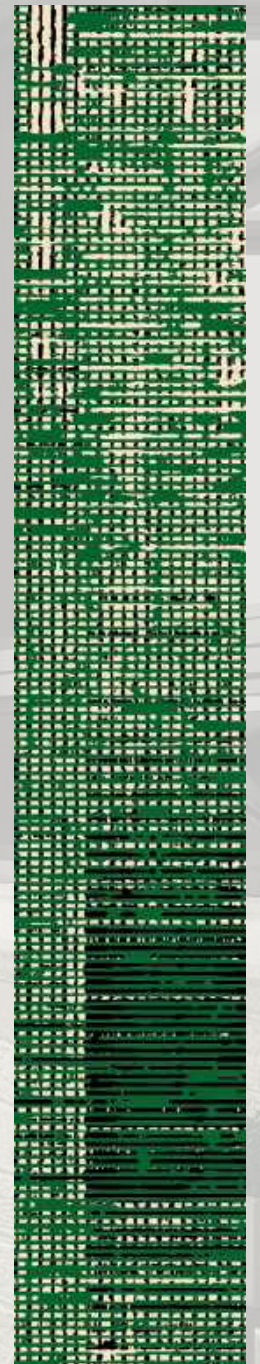


Fit for Purpose.

Neoflex Framework Series Fitness Flooring is purpose-built to be durable, comfortable, slip and indent resistant, as well functional.

It does not dent or crack when subjected to impacts by free-weights or kettle-bells and at the same time reduces ambient noise, step noise, reverberation, noise transfer and vibration transfer creating a pleasant and restful environment.



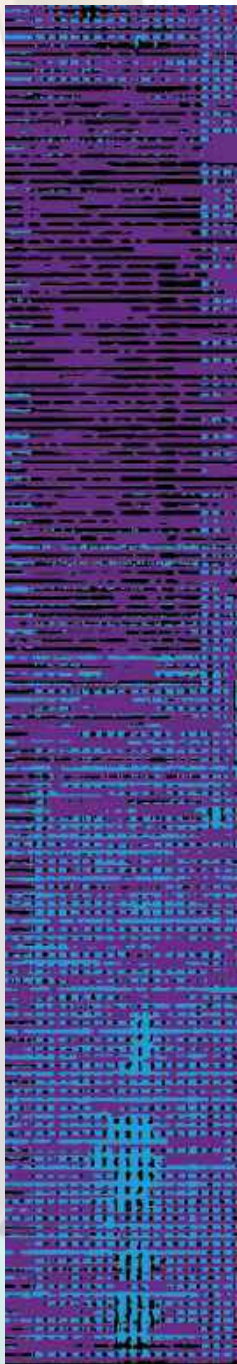


Color
488 SH15 GD11

Thickness
6 mm

Installation
Random

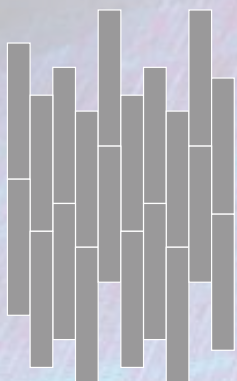




Color
488 SH09 GD19

Thickness
8 mm

Installation
Random







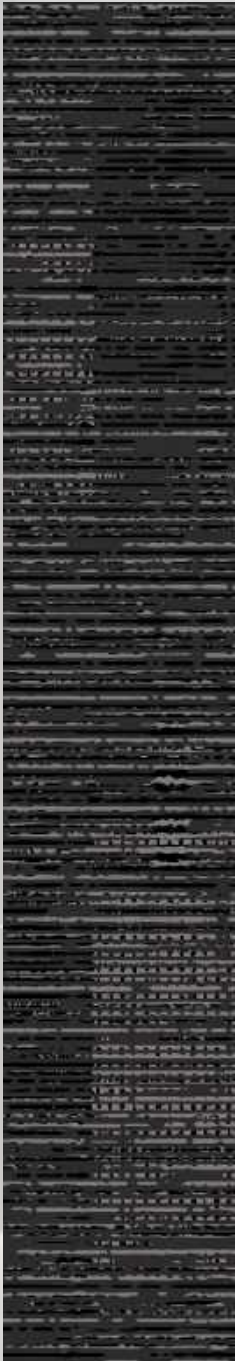


Color
488 SH15 GD07

Thickness
6 mm

Installation
Random





Colors

488 SH06 GD07

488 SH05 GD06

Thickness

8 mm

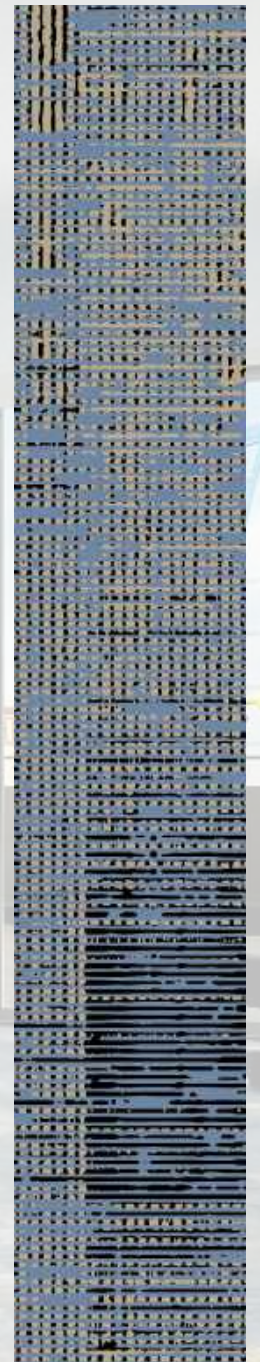
Installation

Random







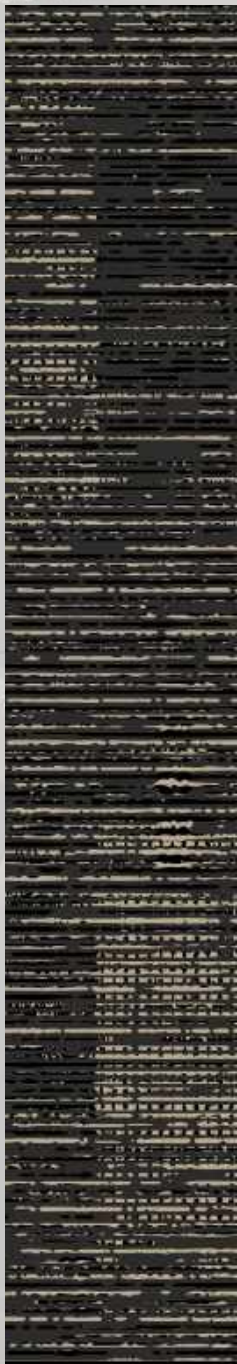


Color
488 SH16 GD08

Thickness
10 mm

Installation
Random

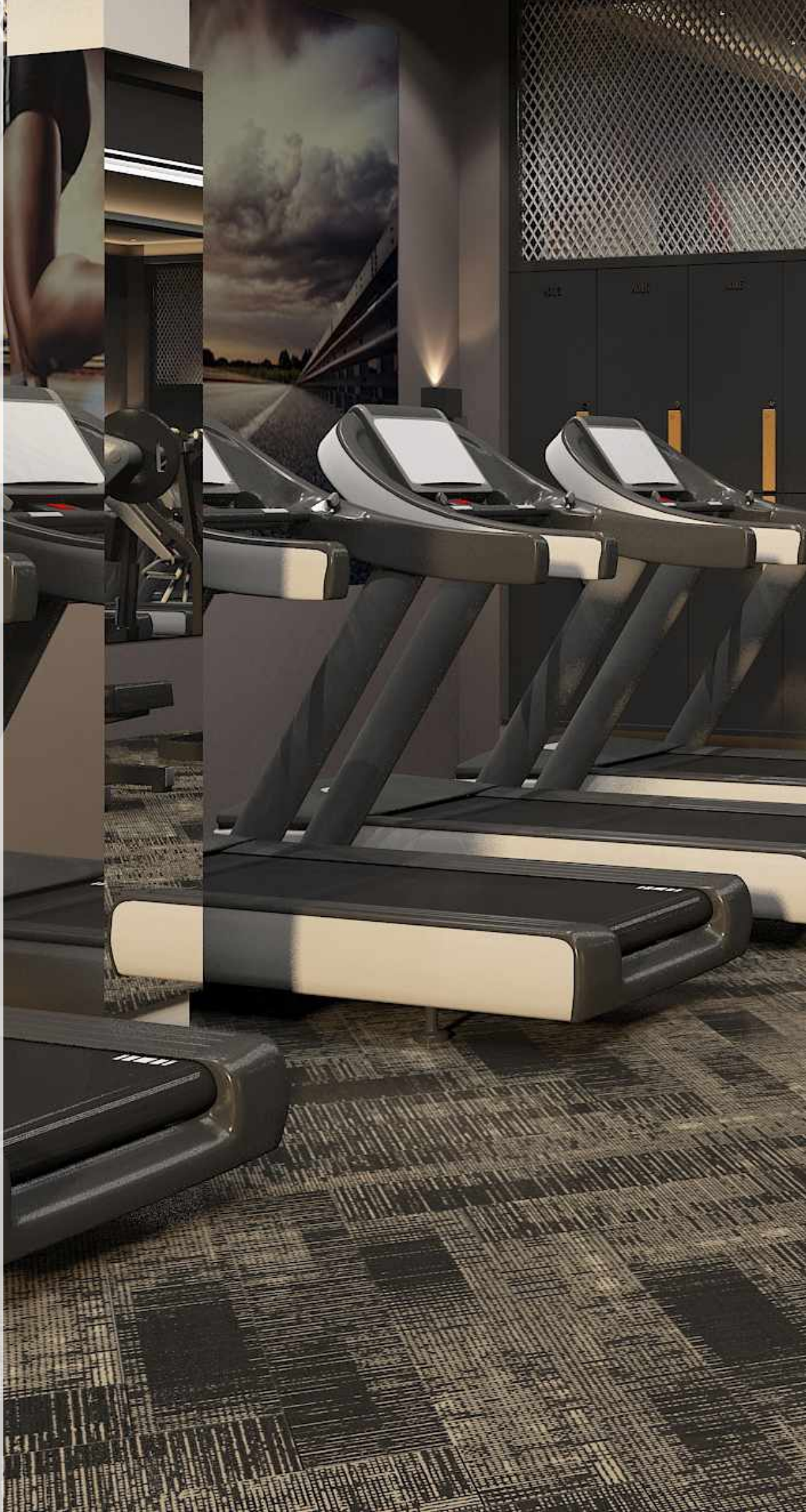




Colors
488 SH16 GD07

Thickness
10 mm

Installation
Herringbone





Standard Colors.

Neoflex Framework Series is available in a wide variety of standard colorways that utilize two pattern colors printed over a black EPDM rubber base.

The below color swatches are meant to give you a first impression of colors and materials. Experience has shown, however, that printed versions of colors cannot in all cases faithfully reproduce the color appearance of the originals. We therefore recommend that you consult your Neoflex partner on your preferred color choices, who will be happy to show you original samples and assist you.



488 SH01 GD06



488 SH02 GD04



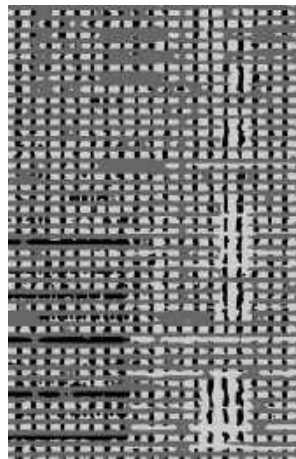
488 SH02 GD07



488 SH03 GD07



488 SH04 GD07



488 SH05 GD06



488 SH05 GD07



488 SH05 GD08



488 SH05 GD10



488 SH05 GD16



488 SH05 GD18



488 SH05 GD20



488 SH06 GD07



488 SH08 GD06



488 SH08 GD07



488 SH08 GD20



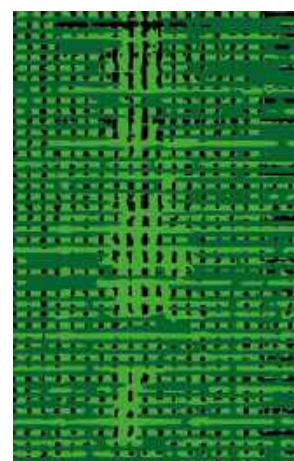
488 SH09 GD07



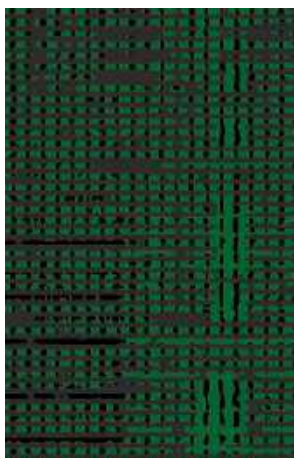
488 SH09 GD19



488 SH10 GD07



488 SH10 GD11



488 SH11 GD07



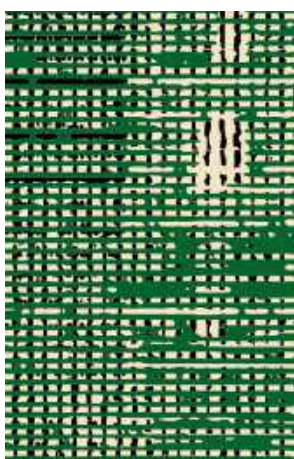
488 SH12 GD07



488 SH15 GD04



488 SH15 GD07



488 SH15 GD11



488 SH15 GD16



488 SH15 GD17



488 SH15 GD18



488 SH16 GD06



488 SH16 GD07



488 SH16 GD08



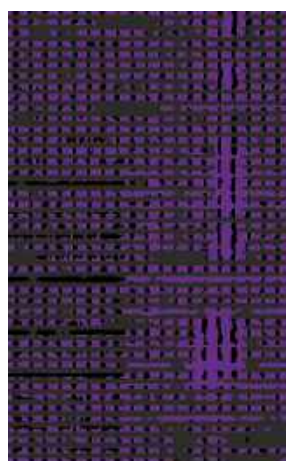
488 SH17 GD07



488 SH17 GD18



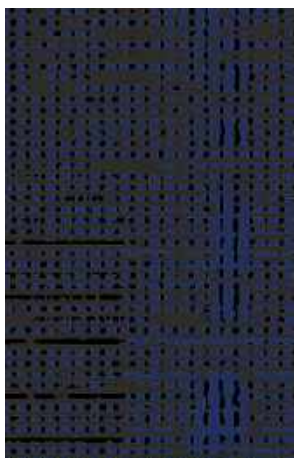
488 SH18 GD07



488 SH19 GD07



488 SH19 GD20



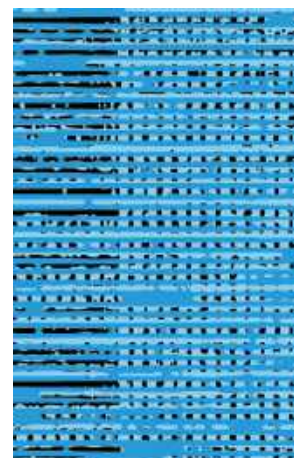
488 SH20 GD07



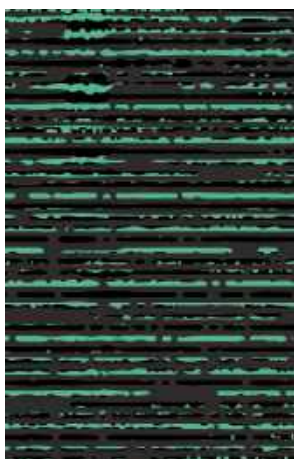
488 SH22 GD07



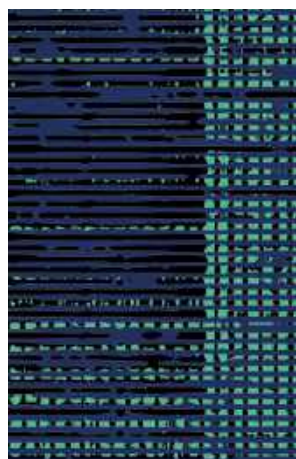
488 SH22 GD08



488 SH22 GD09



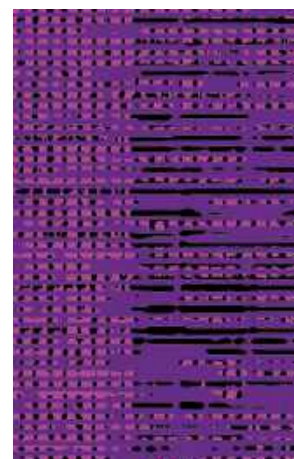
488 SH23 GD07



488 SH23 GD20



488 SH26 GD07

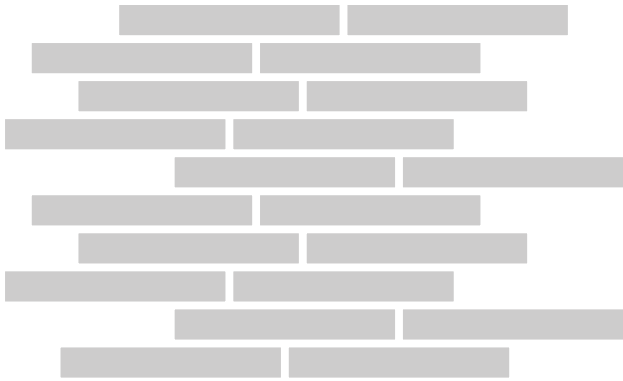


488 SH26 GD19

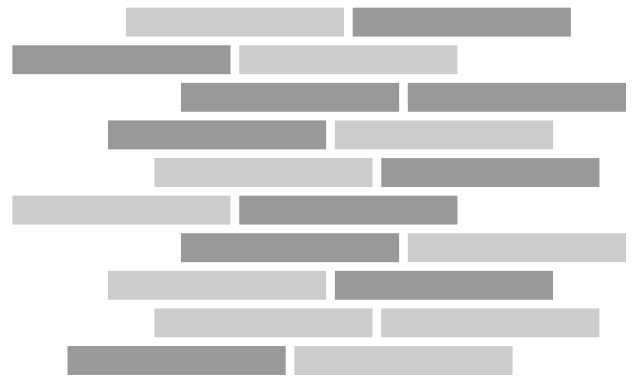
Installation Options.

Neoflex Framework Series Flooring can be installed in a variety of different ways. Different colors can be combined to great effect.

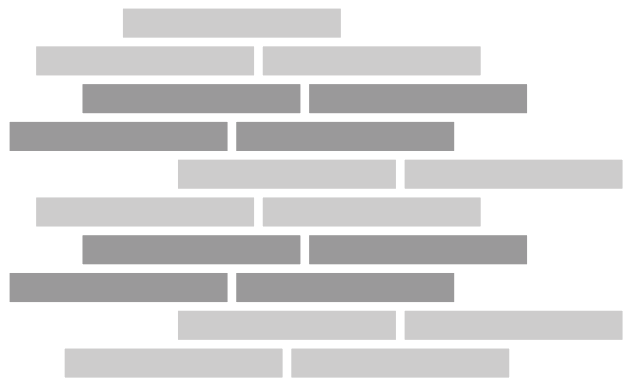
Random



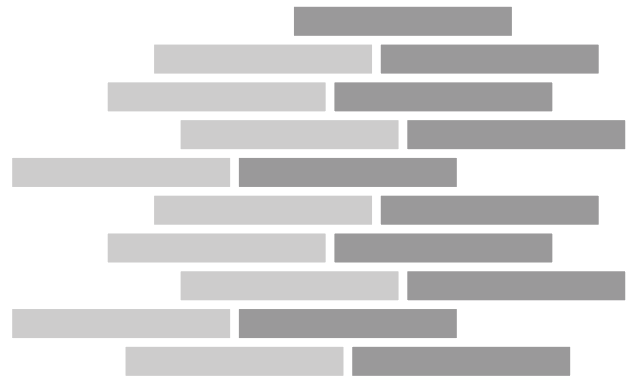
2-Color Random



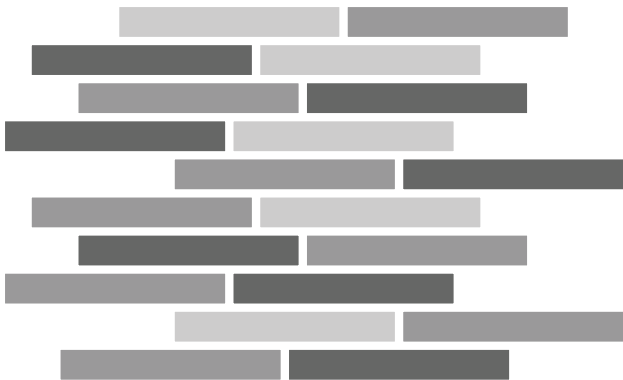
2-Color Random



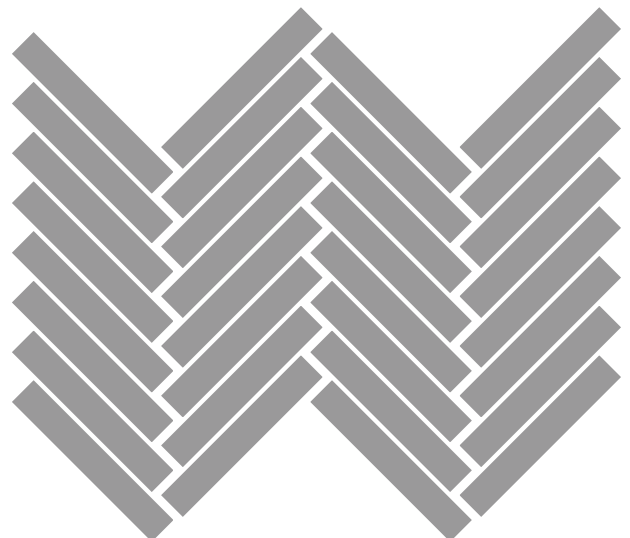
2-Color Random



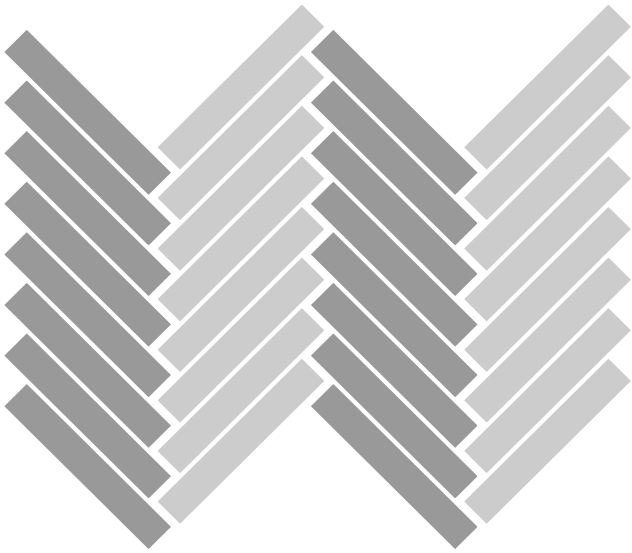
3-Color Random



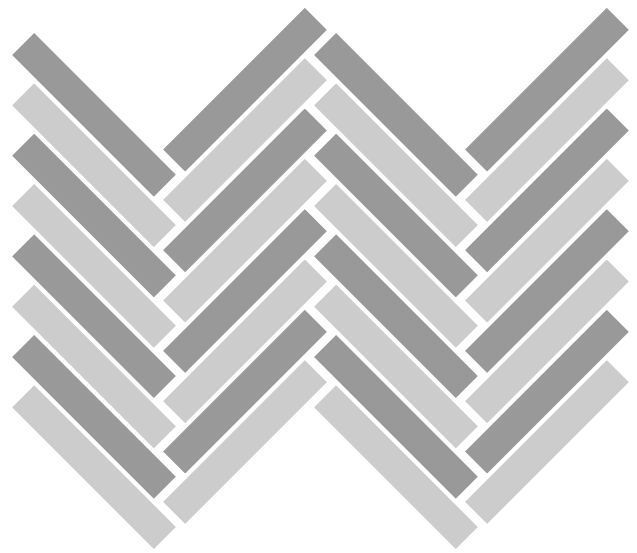
Herringbone



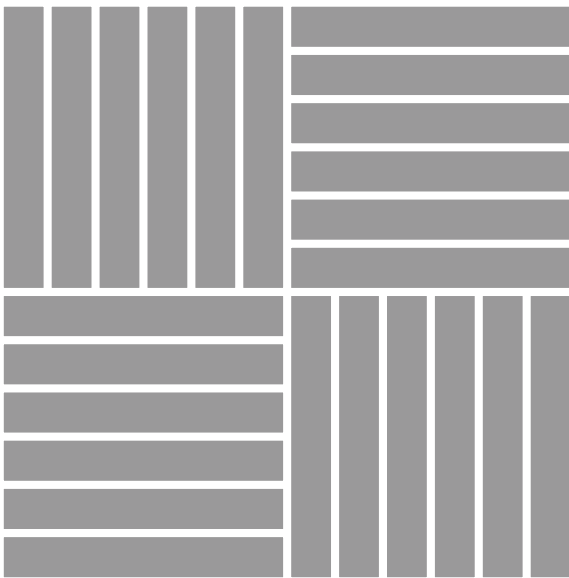
2-Color Herringbone



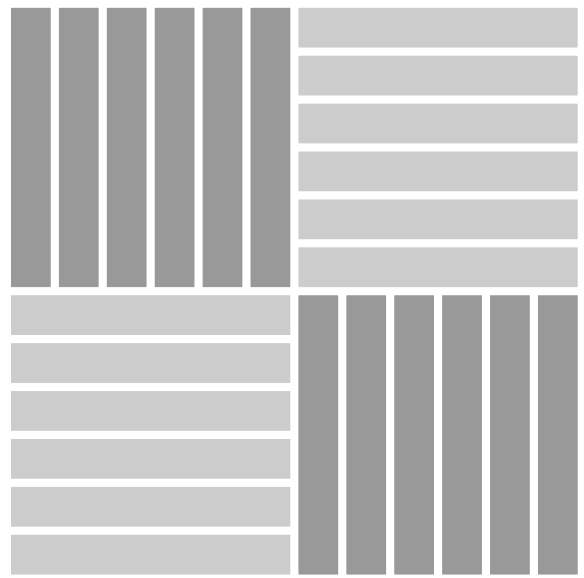
2-Color Herringbone



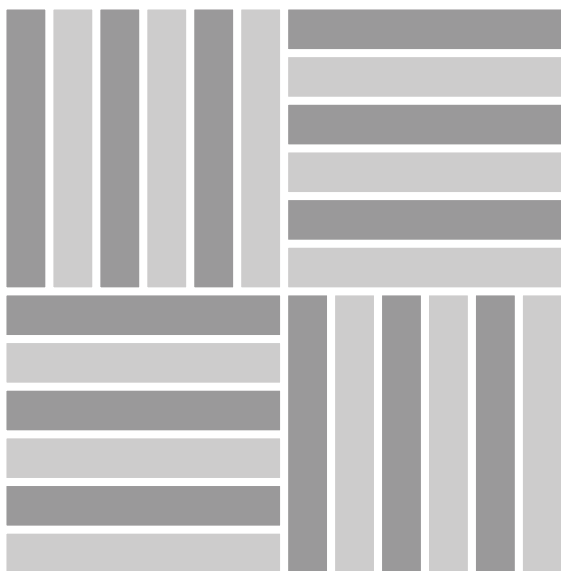
Checkerboard



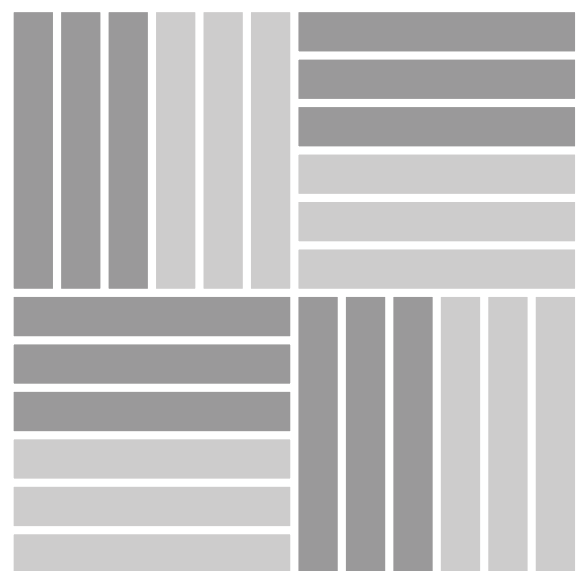
2-Color Checkerboard



2-Color Checkerboard



2-Color Checkerboard



Technical Specifications.

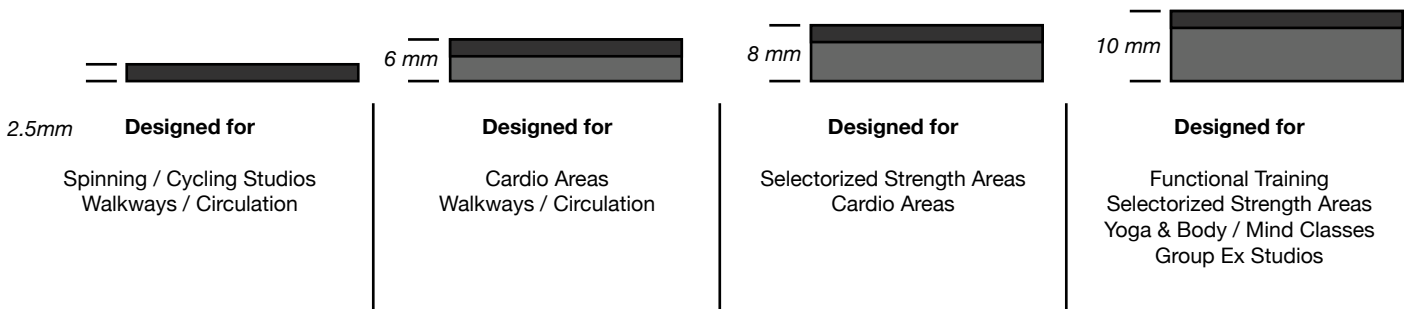
Neoflex Framework Fitness Flooring is made of 100% synthetic EPDM rubber with a life expectancy of 10+ years backed by a 7-year limited guarantee. Its performance surpasses other types of rubber flooring as well as resilient vinyl, PVC, hardwood, laminated wood or EVA foam.

Property	Standard	Result
Thickness		2.5 mm, 6 mm, 8 mm, 10 mm
Dimensions		1200 mm x 200 mm
Weight		± 4.65 kg/sqm
Hardness	ISO 7619-1:2010	62.1° Shore A
Determination of Flexibility & Deflection	ISO 24344:2012	No cracking in either direction
Enhanced Slip Resistance	EN 13845:2005 Annex C	Moderate
Dynamic Coefficient of Friction	EN 13893:2012	0.7
Light Fastness	ISO 105-B02:2013	7-8 Grade
Residual Indentation	ISO 24343-1:2002	0.18 mm
Dimensional Stability	ISO 23999:2012	0.5%
Flammability	EN 13501-1	Efl (Optional Cfl-s1)
Installation		Stikibak™ or Full-Bond

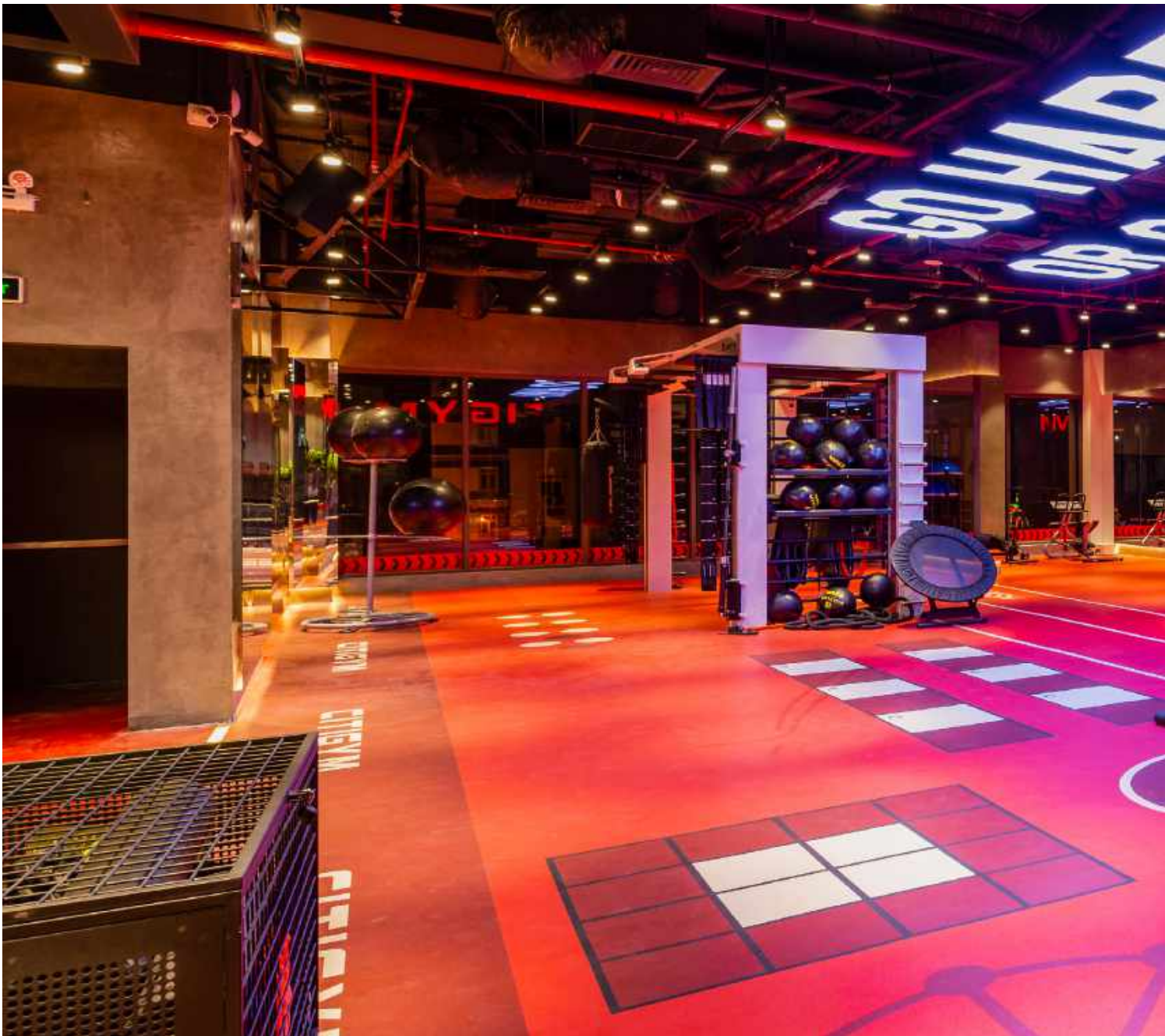
Standard Thicknesses.

Neoflex Framework Series is manufactured in 4 thicknesses, each designed to be used for different fitness flooring applications.

All thicknesses utilize a 2.5mm EPDM top layer. 6mm, 8mm and 10mm thicknesses consist of a 2.5mm EPDM layer laminated to a recycled SBR rubber underlay.



If thicker product is required, rubber underlay can be supplied in rolls, and Neoflex Framework Series can be adhered on top.





Limitless Potential.

Combining great ideas, cutting edge design, and an eye for functionality, Rephouse manufactures rubber flooring products in many varieties other than Neoflex Framework Series.

Rephouse manufactures a complete range of Fitness Flooring solutions. To find out more about these floors, contact your Neoflex partner who will be happy to advise.

Also, visit our website, or join us on social media, for the latest updates.



www.rephouse.com



info@rephouse.com



[@rephouse](https://www.facebook.com/rephouse)



[@rephouse](https://www.instagram.com/rephouse)

